



RECP #: 752618

RECORDED 5/8/2019 AT 1:09 PM BK# 2620 PG# 1660
Debra K. Lee, CLERK OF LARAMIE COUNTY, WY PAGE 1 OF 1

STATE OF WYOMING CORNER RECORD

(In compliance with the CORNER PERPETUATION AND FILING ACT, Wyoming Statutes, 1997 Section 33-29-140, et. seq., and the Rules and Regulations of the Board of Registrations for Professional Engineers and Professional Land Surveyors)

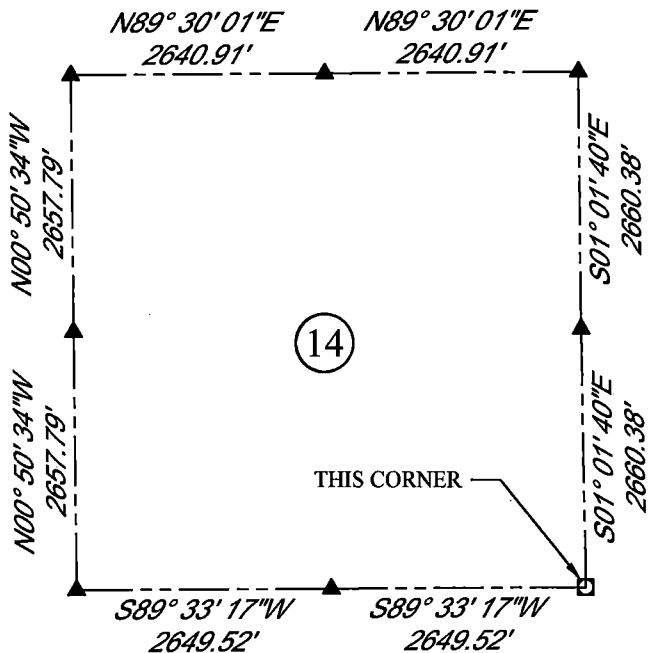
SOUTH EAST CORNER SECTION 14, T. 18 N., R. 63 W., 6TH P.M., LARAMIE COUNTY, WYOMING

GLO: SET A SANDSTONE 18X12X5 10 IN. DEEP. MARKED WITH 3 NOTCHES ON S. SIDE AND 1 NOTCH ON E. SIDE FOR COR. TO SECS. 13, 14, 23, 24.

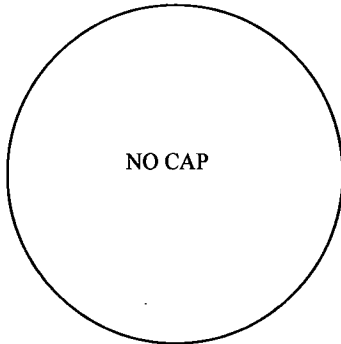
FOUND: FOUND REBAR WITH A STEEL POST ± 1' ON WEST SIDE OF N & S FENCE LINE.



SCALE: NONE
NORTH DETERMINED BY
G.P.S OBSERVATIONS



FOUND REBAR WITH STEEL POST



DATE OF FIELD WORK: 08/20/2018 OFFICE REFERENCE: 746049 ----

LEGEND:

- FOUND BLM CAP
- FOUND USFS CAP
- FOUND STONE
- FOUND PRIVATE MONUMENT
- ◆ CALCULATED POSITION
- ▲ SET MONUMENT (LS10245)
- SECTION LINE

CROSS INDEX DIAGRAM

	1	2	3	4	5	6	7	8	9	10	11	12	13	14	15	16	17	18	19	20	21	22	23	24	25
A																									
B																									
C		6		5		4		3		2		1													
D																									
E																									
F																									
G		7		8		9		10		11		12													
H																									
J																									
K																									
L		18		17		16		15		14		13													
M																									
N																									
O		19		20		21		22		23		24													
P																									
Q																									
R																									
S																									
T		30		29		28		27		26		25													
U																									
V																									
W																									
X		31		32		33		34		35		36													
Y																									
Z																									

WOOD
2615 AVIATION DRIVE
SHERIDAN, WY 82801
PH: 307-675-6400



THIS CORNER RECORD WAS
PREPARED BY ME OR UNDER
MY DIRECTION AND
SUPERVISION,
SEAL AND SIGNATURE

